



Morningside Nature Center



Welcome! Morningside Nature Center opened in 1969 as the City of Gainesville's first nature park. The 277 acres showcase seven of the Natural Communities most common to North Central Florida and a large diversity of plant species. Please see the back of this kiosk to learn more about Natural Communities.

Morningside offers a refuge for native plants and animals. Through restorative management Morningside will resemble the healthy natural ecosystems that existed 200 years ago. Currently, Morningside has one of the best examples of the longleaf pine natural community in the area.



Park Rules

The park is a sanctuary where plants, animals, historic and cultural resources are protected by law (Chapter 18, section of the City of Gainesville Code of Ordinances)

Enjoy and protect this park by making sure

Bicycles and motorized vehicles remain in parking areas

Pets remain at home

Plants, animals, and cultural resources are undisturbed

Litter is placed in appropriate containers

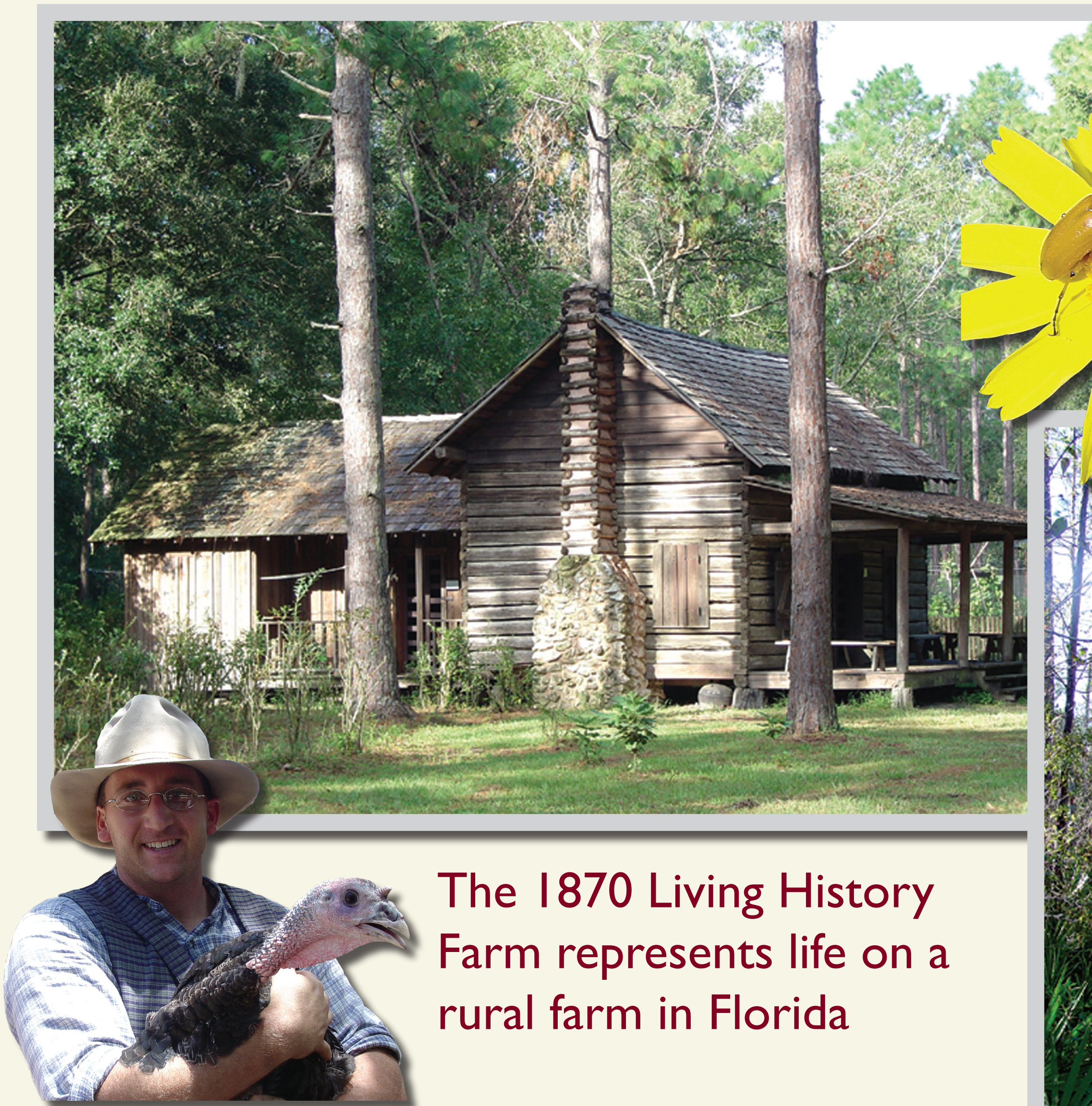
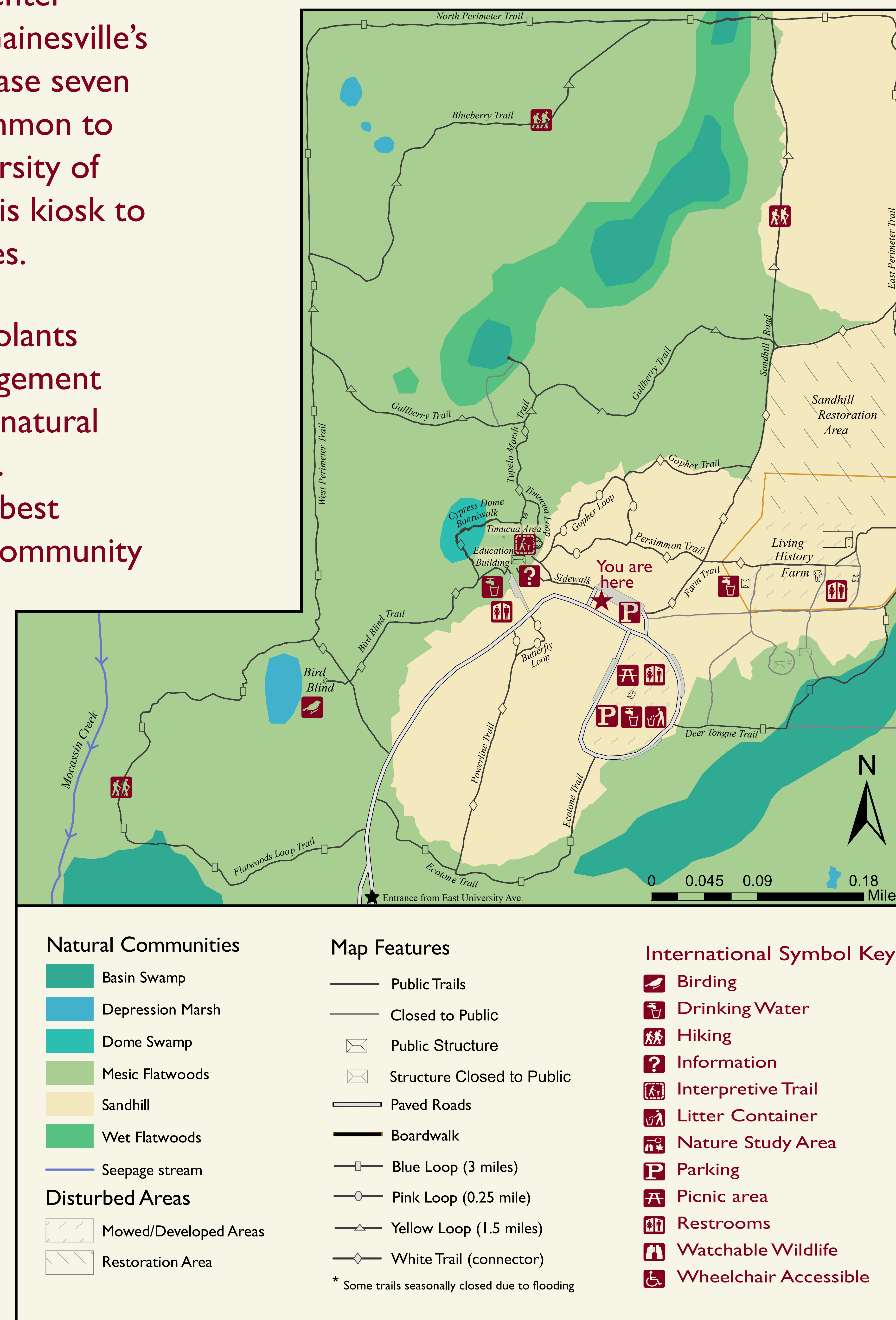
To remain on trails

Animals are not fed, released, or removed

Alcohol and firearms are prohibited

Smoking and ground fires are prohibited due to wildfire risk

Thank you for caring for Gainesville's Natural Treasures!



The 1870 Living History Farm represents life on a rural farm in Florida



The Bird Blind. Get a closer look at birds visiting the feeders



The Timucuan Area



Hiking Trails and a self-guided tour. Morningside has 5 miles of trails, all of easy to moderate difficulty. Many trails are accessible to wheelchairs and strollers. Please call ahead for use of our all-terrain wheelchair.



Special Events and educational programs throughout the year



The park is open from 9am-5pm seven days a week

For more information:

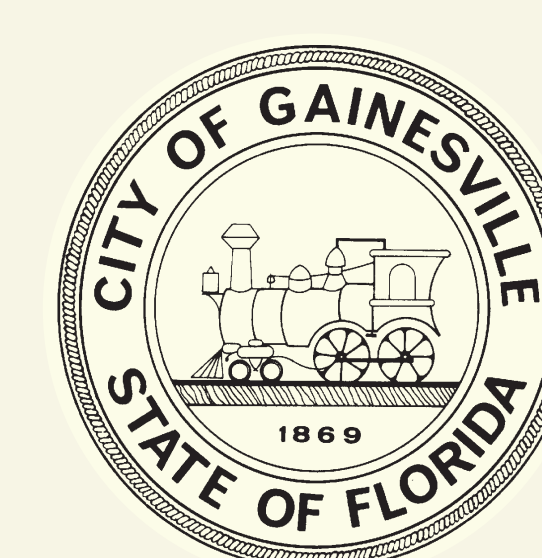
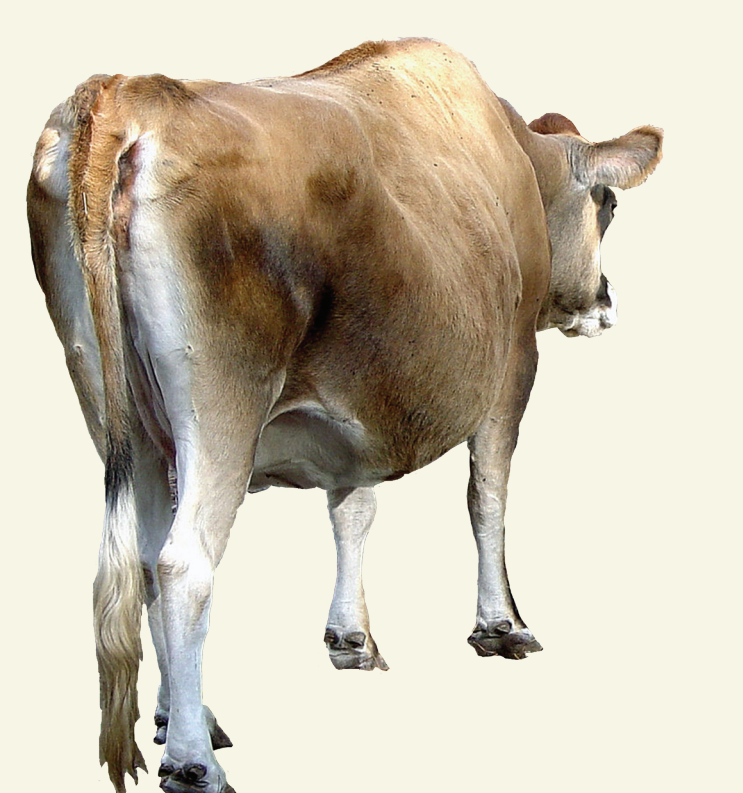
Pick up trail maps and other brochures in the rack below

Visit Morningside's office (see map for location)

Call 352-334-2170

Log on to our website, www.natureoperations.org for calendar of programs and events

Look for the map of other Gainesville nature parks on the back of this sign



City of Gainesville, Department of Parks, Recreation and Cultural Affairs, Nature Operations Division